

B+G TRIANGLE PLANTER

Accessories » Planters



Designed By: **Botton + Gardiner**

Applications: **Outdoor**

B+G TRIANGLE PLANTER

Accessories » Planters



Triangle Planter - Charcoal 34 in x 16 in x 24 in



Triangle Planter - Charcoal 44 in x 32 in x 30 in



B+G TRIANGLE PLANTER

Accessories » Planters

Distinctive geometric planter designed to create striking focal points and large-scale landscapes. Available in large formats to create bold statements for urban biophilic projects.

Description	<p>Designed for commercial use, each planter is constructed to withstand the demands of high-traffic public spaces. They offer a durable and visually striking solution for integrating structure, scale, and greenery into the public realm.</p> <p>The Triangle Planter introduces a distinctive geometric statement to the landscape. With formats reaching up to 77", it's designed to create striking focal points and anchor large-scale spaces. Its angular form pairs well with both curvilinear and rectilinear site layouts, offering designers a bold option for distinctive place-making.</p> <p>Available in 5 sizes ranging from 34" to 77" the range accommodates everything from small feature plantings to large-scale urban greening projects.</p> <p>The collection is available in the full range of Botton + Gardiner powder coat colors, allowing seamless coordination with surrounding furniture and fixtures. While there is no base drainage, an optional irrigation system can be integrated to support long-term planting health in urban settings. Designed for durability and visual cohesion, these planters deliver lasting performance with minimal maintenance.</p>
-------------	---

How to Specify	<p>Select Size</p> <p>Choose a color from the b+g powder coat range. Planters will be finished to match the selected color.</p>
----------------	---

Material	Fiberglass
----------	------------

Dimensions	<p>Available in:</p> <p>34" (864mm) w x 24" (610mm) d x 16" (406mm) h</p> <p>36" (914mm) w x 26" (660mm) d x 16" (406mm) h</p> <p>44" (1118mm) w x 30" (762mm) d x 32" (813mm) h</p> <p>77" (1956mm) w x 56" (1422mm) d x 36" (914mm) h</p>
------------	--

Made In	USA
---------	-----

Lead Time	6-8 weeks
-----------	-----------

Assembly & Delivery	Shipped fully assembled on pallets
---------------------	------------------------------------

B+G TRIANGLE PLANTER

Accessories » Planters

Fixing Detail Fixed only. Surface fixed by others. Anchors not included.

Customisable N/A

B+G TRIANGLE PLANTER

Accessories » Planters

Colour & Finish Options

B+G USA Powdercoats



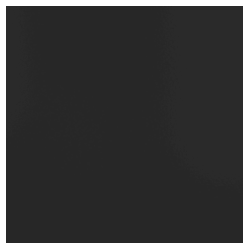
Black



Bronze



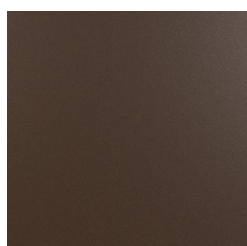
Carmine Red



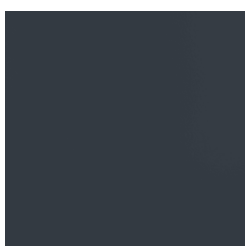
Charcoal



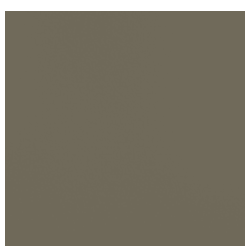
Claypot



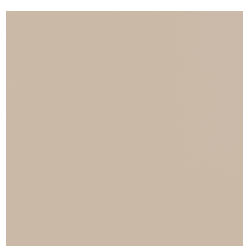
Core Ten



Deep Ocean



Mangrove



Paper Bark



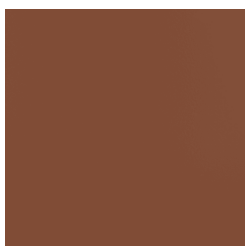
Pure Orange



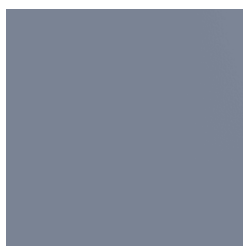
Silver Pearl



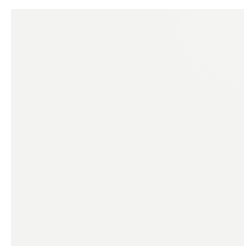
Sky Blue



Territory Red



Wedgewood



White



Yellow Green



Zinc Yellow