

B+G CYLINDER PLANTER

Accessories » Planters



Designed By: **Botton + Gardiner**

Applications: **Outdoor**

B+G CYLINDER PLANTER

Accessories » Planters



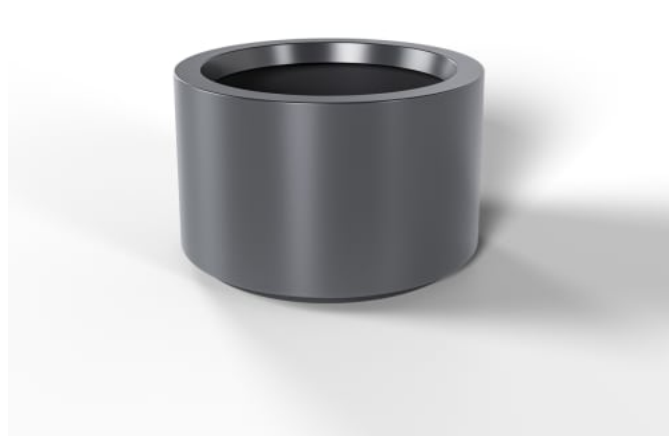
Cylinder Planter - Charcoal 24 in x 32 in



Cylinder Planter - Charcoal 30 in x 30 in



Cylinder Planter - Charcoal 36 in x 36 in



B+G CYLINDER PLANTER

Accessories » Planters



B+G CYLINDER PLANTER

Accessories » Planters

Timeless vertical planter ideal for trees and structured plantings. Clean lines, multiple sizes and durable finishes suit contemporary or traditional landscapes.

Description	<p>Designed for commercial use, each planter is constructed to withstand the demands of high-traffic public spaces. They offer a durable and visually striking solution for integrating structure, scale, and biophilia into the public realm.</p> <p>The Cylinder Planter delivers a timeless vertical profile that complements both contemporary and traditional settings. Its clean lines and balanced proportions make it suitable for trees, large shrubs, or bold architectural plantings. Ideal for flanking pathways, entries, or creating rhythm in linear landscapes, the Cylinder Planter provides structure.</p> <p>Available in 5 sizes ranging from 24" to 60" allowing for significant tree planting or rhythmic linear installations.</p> <p>The collection is available in the full range of Botton + Gardiner powder coat colours, allowing seamless coordination. While there is no base drainage, an optional irrigation system can be integrated to support long-term planting health in urban settings. Designed for durability and visual cohesion, these planters deliver lasting performance with minimal maintenance.</p>
How to Specify	<p>Select Size</p> <p>Choose a color from the b+g powder coat range. Planters will be finished to match the selected color.</p>
Material	Fiberglass
Dimensions	<p>Available in:</p> <p>24" (610mm) w x 24" (610mm) d x 32" (813mm) h</p> <p>30" (762mm) w x 30" (762mm) d x 30" (762mm) h</p> <p>36" (914mm) w x 36" (914mm) d x 36" (914mm) h</p> <p>48" (1219mm) w x 48" (1219mm) d x 30" (762mm) h</p> <p>60" (1524mm) w x 60" (1524mm) d x 36" (914mm) h</p>
Made In	USA
Lead Time	6-8 weeks
Assembly & Delivery	Shipped fully assembled on pallets

B+G CYLINDER PLANTER

Accessories » Planters

Fixing Detail	Fixed only. Surface fixed by others. Anchors not included.
Customisable	N/A

B+G CYLINDER PLANTER

Accessories » Planters

Colour & Finish Options

B+G USA Powdercoats

				
Black	Bronze	Carmine Red	Charcoal	Claypot
				
Core Ten	Deep Ocean	Mangrove	Paper Bark	Pure Orange
				
Silver Pearl	Sky Blue	Territory Red	Wedgewood	White
				
Yellow Green	Zinc Yellow			