

B+G TERRAIN PLINTH BENCH

Seating » Benches



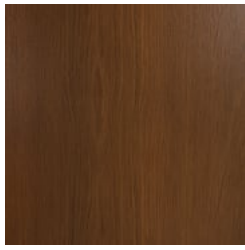
Collection: **Terrain**

B+G TERRAIN PLINTH BENCH

Seating » Benches



Hardwood Australian
Eucalyptus Light Oil



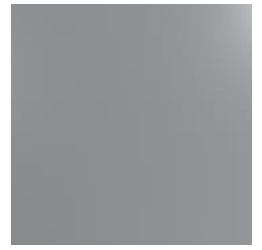
Hardwood Australian
Eucalyptus Dark Oil



Core Powder-Coat
Coreten Textured



Core Powder-Coat
Charcoal Satin



Core Powder-Coat
Silver Pearl Satin
Metallic



Core Powder-Coat
Black Satin



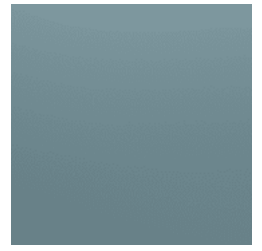
Core Powder-Coat
White Satin



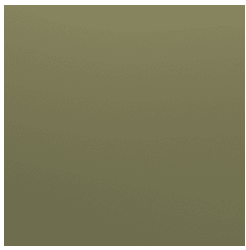
Core Powder-Coat
Bronze Satin Metallic



Signature Powder-
Coat Deep Ocean
Satin



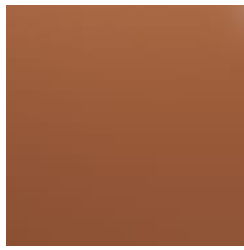
Signature Powder-
Coat Wedgewood
Satin



Signature Powder-
Coat Mangrove Satin



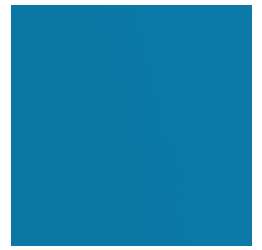
Signature Powder-
Coat Territory Red
Matt



Signature Powder-
Coat Claypot Satin



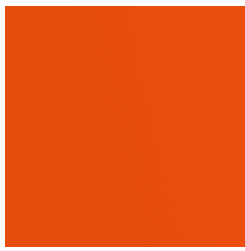
Signature Powder-
Coat Paperbark Satin



Bold Powder-Coat
Sky Blue Satin



Bold Powder-Coat
Yellow Green Satin



Bold Powder-Coat
Pure Orange Satin



Bold Powder-Coat
Carmine Red Satin



Bold Powder-Coat
Zinc Yellow Satin

B+G TERRAIN PLINTH BENCH

Seating » Benches



Contemporary wall-mounted seating. Solid, trapezoidal, hardwood battens in 2 colors with a sleek steel frame in 17 zinc-primed powder-coat finishes.

Description

The juxtaposition of solid, hardwood battens and a sleek steel frame is unified with trapezoidal design elements that add strength and visual appeal to the Terrain plinth bench. Finishes include 2 Australian Eucalyptus hardwood and 17 zinc-primed powder-coat colors. Terrain is a high-quality collection that adds a robust, contemporary feel to public spaces.

Made In

USA

Dimensions

83"X x 22"D x 5"H
(2100mmW x 555mmD x 125mmH)

Recommended installed seat height: 17" (440mmH)

Weight

114.4lbs (52kg)

Batten Type

Hardwood: Australian Eucalyptus

Frame

Powder-coated, zinc-primed steel

B+G TERRAIN PLINTH BENCH

Seating » Benches

Powder Coat

Core

Coreten (textured), Charcoal (satin), Silver Pearl (satin metallic), Black (satin), White (satin), Bronze (satin metallic)

Signature

Deep Ocean (satin), Wedgewood (satin), Mangrove (satin), Territory Red (matt), Claypot (satin), Paperbark (satin)

Bold

Sky Blue (satin), Yellow Green (satin), Pure Orange (satin), Carmine Red (satin), Zinc Yellow (satin)

Sustainability

Certified Hardwood

All hardwood is sourced from sustainable forests certified by the Program for the Endorsement of Forest Certification (PEFC), the world's largest forestry certification system.

Recycled Materials

We locally source our steel. It means we know it uses recycled content and is 100% recyclable.

Low Pollutants

Our powder-coating process doesn't emit Volatile Organic Compounds (VOCs) and has Environmental Product Declarations (EPDs) that enable projects to qualify for LEED credits.

Warranty

5-year warranty. View the [warranty](#) for more details.

Lead Time

6-8 weeks

Assembly & Delivery

Shipped fully assembled on pallets.

Fixing Detail

Fixed by others to an existing plinth.
Anchors not included.

How to Specify

Select your batten finish
Select your frame finish

B+G TERRAIN PLINTH BENCH

Seating » Benches

Care Instructions

Hardwood

Cleaning

Remove any loose surface deposits with a soft bristled brush and wipe down with fresh water and a non-abrasive cloth.

Oiling

Oiling of timber will postpone natural greying, repel moisture, improve mould resistance, help maintain a smooth surface texture and enhance the grain and colour.

To maintain, lightly sand rough areas of timber and brush on one coat of timber decking oil every 6 months or as required.

Powder-Coat

Cleaning

Carefully remove any loose surface deposits with a wet sponge or soft bristled brush.

Use a soft (non-abrasive) cloth or brush and a diluted solution of mild detergent and warm water.

Ensure surfaces are thoroughly rinsed with clean fresh water after cleaning to remove all residues.

Never use thinners, abrasive cleaning agents, alcohol-based, acid or alkali cleaning agents.

Additional Comments

Hardwood is treated with a UV-resistant oil finish in a light or dark tone. Battens feature a trapezoidal profile.
