

B+G SORRENTO TROUGH PLANTER

Accessories » Planters



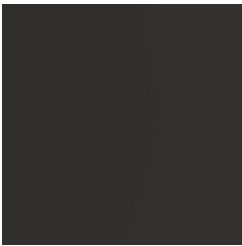
Collection: **Sorrento**

B+G SORRENTO TROUGH PLANTER

Accessories » Planters



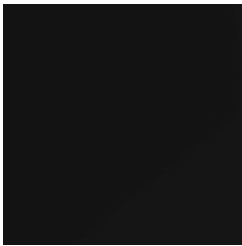
Core Powder-Coat
Coreten Textured



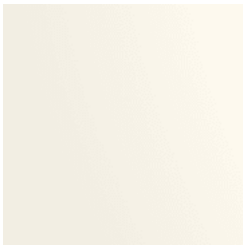
Core Powder-Coat
Charcoal Satin



Core Powder-Coat
Silver Pearl Satin
Metallic



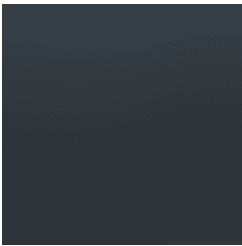
Core Powder-Coat
Black Satin



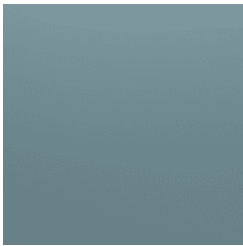
Core Powder-Coat
White Satin



Core Powder-Coat
Bronze Satin Metallic



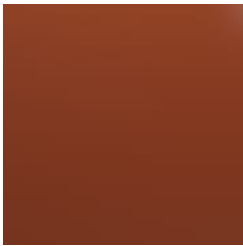
Signature Powder-
Coat Deep Ocean
Satin



Signature Powder-
Coat Wedgewood
Satin



Signature Powder-
Coat Mangrove Satin



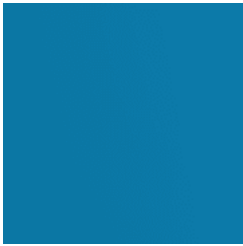
Signature Powder-
Coat Territory Red
Matt



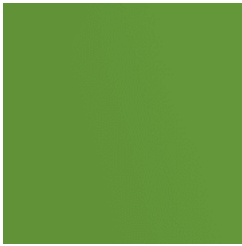
Signature Powder-
Coat Claypot Satin



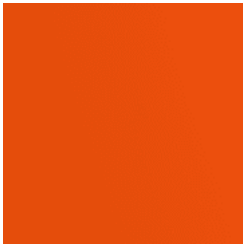
Signature Powder-
Coat Paperbark Satin



Bold Powder-Coat
Sky Blue Satin



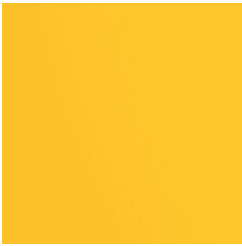
Bold Powder-Coat
Yellow Green Satin



Bold Powder-Coat
Pure Orange Satin



Bold Powder-Coat
Carmine Red Satin



Bold Powder-Coat
Zinc Yellow Satin

B+G SORRENTO TROUGH PLANTER

Accessories » Planters



Modern, modular, trough planter design creates little islands of calm with bursts of greenery. Available in steel frame in 17 powder-coat finishes.

Description Inspired by the Italian love of modern design, the Sorrento block planter is as much at home in the public spaces of Chicago as it is on boardwalks of the Mediterranean. The modular trough planter can create little islands of calm with bursts of greenery. A steel frame is available in 17 powder-coat finishes.

Made In USA

Dimensions 48"W x 25"D x 17"H
(1220mmW x 640mmD x 435mmH)

Weight 118lbs (54kg)

Frame Powder-coated steel

B+G SORRENTO TROUGH PLANTER

Accessories » Planters

Powder Coat	<div>Core</div> <div>Coreten (textured), Charcoal (satin), Silver Pearl (satin metallic), Black (satin), White (satin), Bronze (satin metallic)</div> <div>Signature</div> <div>Deep Ocean (satin), Wedgewood (satin), Mangrove (satin), Territory Red (matt), Claypot (satin), Paperbark (satin)</div> <div>Bold</div> <div>Sky Blue (satin), Yellow Green (satin), Pure Orange (satin), Carmine Red (satin), Zinc Yellow (satin)</div>
Sustainability	<div>Recycled Materials</div> <div>We locally source our steel. It means we know it uses recycled content and is 100% recyclable.</div> <div>Low Pollutants</div> <div>Our powder-coating process doesn't emit Volatile Organic Compounds (VOCs) and has Environmental Product Declarations (EPDs) that enable projects to qualify for LEED credits.</div>
Warranty	5-year warranty. View the warranty for more details.
Lead Time	6-8 weeks
Assembly & Delivery	Shipped fully assembled on pallets.
Fixing Detail	Freestanding or surface fixed by others. Anchors not included.
How to Specify	Select your frame colour Opt to add drainage holes (for outdoor use) Select your fixing - surface fixed or freestanding
Care Instructions	<div>Powder-Coat</div> <div>Carefully remove any loose surface deposits with a wet sponge or soft bristled brush.</div> <div>Use a soft (non-abrasive) cloth or brush and a diluted solution of mild detergent and warm water.</div> <div>Ensure surfaces are thoroughly rinsed with clean fresh water after cleaning to remove all residues.</div> <div>Never use thinners, abrasive cleaning agents, alcohol-based, acid or alkali cleaning agents.</div>