

B+G SORRENTO TABLE

Tables » Dining Height Tables



Collections: **Sorrento**

B+G SORRENTO TABLE

Tables » Dining Height Tables



B+G SORRENTO TABLE

Tables » Dining Height Tables



B+G SORRENTO TABLE

Tables » Dining Height Tables



B+G SORRENTO TABLE

Tables » Dining Height Tables



B+G SORRENTO TABLE

Tables » Dining Height Tables



B+G SORRENTO TABLE

Tables » Dining Height Tables

Modern table design with contrasting finishes, folded forms. Battens in hardwood or Duraslat colors and steel frame in powder-coat finishes.

Description	Inspired by the Italian love of modern design, the Sorrento table is as much at home in the public spaces of Chicago as it is on boardwalks of the Mediterranean. The contrasting finishes, folded forms, and modular table design combine to create public spaces that draw the eye and challenge the status quo. The frame features a striking asymmetrical cut-out design that is visible from all directions adding to the unique visual aesthetics of the table. Finishes include battens in Australian Eucalyptus hardwood or Duraslat™ colors and steel frame in powder-coat finishes.
How to Specify	Select your batten finish Select your frame finish
Sustainability	<p>Certified Hardwood Australian Eucalyptus hardwood is sourced from sustainable forests certified by the Program for the Endorsement of Forest Certification (PEFC), the world's largest forestry certification system.</p> <p>Material Alternatives We offer sustainable alternatives to hardwood, such as Duraslat™; a mineral-based composite material that contains no Volatile Organic Compounds (VOCs) and is engineered using up to 46% natural filler that is based on a renewable mineral.</p> <p>Recycled Materials We locally source our steel. It means we know it uses recycled content and is 100% recyclable.</p> <p>Low Pollutants Our powder-coating process doesn't emit VOCs and has Environmental Product Declarations (EPDs) that enable projects to qualify for LEED credits.</p>
Powder Coat	Core Signature Bold
Dimensions	71"W x 29"D x 29"H (1800mmW x 725mmD x 725mmH)
Batten Type	Hardwood Duraslat™

B+G SORRENTO TABLE

Tables » Dining Height Tables

Frame	Powder-coated steel with the Windows perforated pattern.
Weight	Hardwood 193lbs (88kg) Duraslat™ 164lbs (75kg)
Made In	USA
Lead Time	6-8 weeks
Assembly & Delivery	Shipped fully assembled on pallets.
Fixing Detail	Surface fixed by others. Anchors not included.
Warranty	5-year warranty. View the warranty for more details.
Additional Comments	Hardwood is treated with a UV-resistant oil finish in a light or dark tone.

B+G SORRENTO TABLE

Tables » Dining Height Tables

Colour & Finish Options

B+G USA Hardwood



Australian
Eucalyptus Dark Oil



Australian
Eucalyptus Light Oil

B+G USA Duraslat



Canyon



Outback

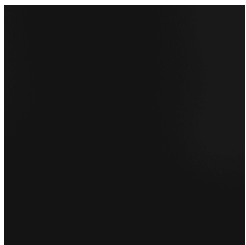


Plateau



Summit

B+G USA Powdercoats



Black



Bronze



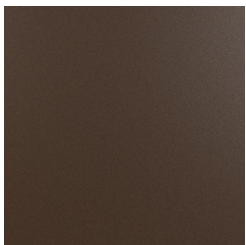
Carmine Red



Charcoal



Claypot



Core Ten



Deep Ocean



Mangrove



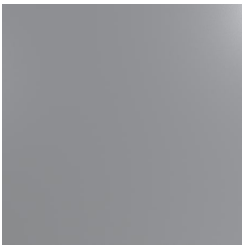
Paper Bark



Pure Orange

B+G SORRENTO TABLE

Tables » Dining Height Tables



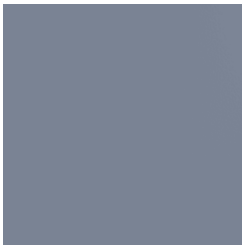
Silver Pearl



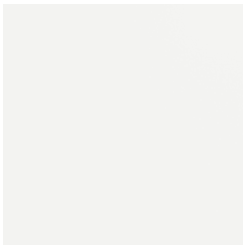
Sky Blue



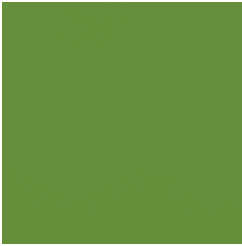
Territory Red



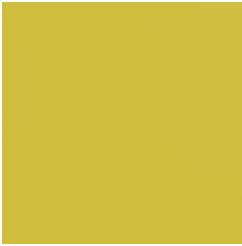
Wedgewood



White



Yellow Green



Zinc Yellow