

# B+G SORRENTO BACK TO BACK SEAT

Seating » Seats



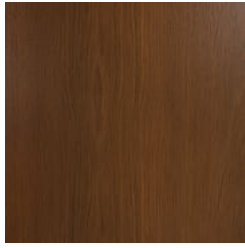
Collection: **Sorrento**

# B+G SORRENTO BACK TO BACK SEAT

Seating » Seats



Hardwood Australian  
Eucalyptus Light Oil



Hardwood Australian  
Eucalyptus Dark Oil



Duraslat™ Plateau



Duraslat™ Summit



Duraslat™ Canyon



Duraslat™ Outback



Core Powder-Coat  
Coreten Textured



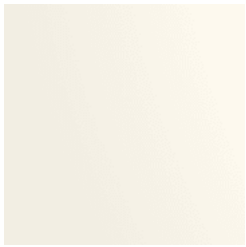
Core Powder-Coat  
Charcoal Satin



Core Powder-Coat  
Silver Pearl Satin  
Metallic



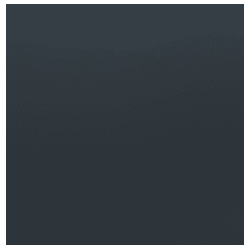
Core Powder-Coat  
Black Satin



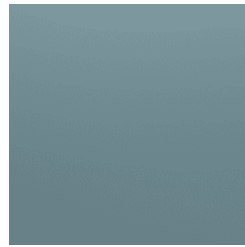
Core Powder-Coat  
White Satin



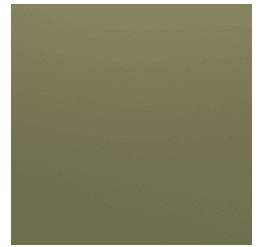
Core Powder-Coat  
Bronze Satin Metallic



Signature Powder-  
Coat Deep Ocean  
Satin



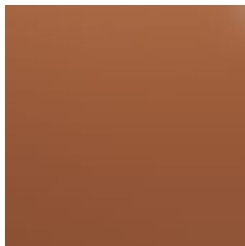
Signature Powder-  
Coat Wedgewood  
Satin



Signature Powder-  
Coat Mangrove Satin



Signature Powder-  
Coat Territory Red  
Matt



Signature Powder-  
Coat Claypot Satin



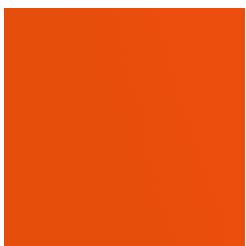
Signature Powder-  
Coat Paperbark Satin



Bold Powder-Coat  
Sky Blue Satin



Bold Powder-Coat  
Yellow Green Satin



Bold Powder-Coat  
Pure Orange Satin



Bold Powder-Coat  
Carmine Red Satin



Bold Powder-Coat  
Zinc Yellow Satin



# B+G SORRENTO BACK TO BACK SEAT

Seating » Seats



# B+G SORRENTO BACK TO BACK SEAT

Seating » Seats

Modular seating with contrasting finishes and folded forms. Battens in 2 hardwood or 4 Duraslat™ colors and steel frame in 17 powder-coat finishes.

**Description** Inspired by the Italian love of modern design, the Sorrento back-to-back seat is as much at home in the public spaces of Chicago as it is on boardwalks of the Mediterranean. The contrasting finishes, folded forms, and modular back-to-back seat design combine to create public spaces that draw the eye and challenge the status quo. A striking asymmetrical cut-out design on the backrest is visible from all directions adding to the unique visual aesthetics of the back-to-back seat. Finishes include battens in 2 Australian Eucalyptus hardwood or 4 Duraslat™ colors and steel frame in 17 powder-coat finishes.

**Made In** USA

**Dimensions**

Hardwood  
83"W x 48"D x 29"H  
(2100mmW x 1230mmD x 745mmH)

Seat height: 17" (440mm)

Duraslat™  
83"W x 48"D x 29"H  
(2100mmW x 1210mmD x 735mmH)

Seat height: 17" (435mm)

**Weight**

Hardwood  
385lbs (175kg)

Duraslat™  
350lbs (159kg)

**Batten Type**

Hardwood  
Australian Eucalyptus

Duraslat™  
Plateau, Summit, Canyon, Outback

**Frame** Powder-coated steel with backrest that features the Windows perforation pattern on both sides.

# B+G SORRENTO BACK TO BACK SEAT

Seating » Seats

---

## Powder Coat

### Core

Coreten (textured), Charcoal (satin), Silver Pearl (satin metallic), Black (satin), White (satin), Bronze (satin metallic)

### Signature

Deep Ocean (satin), Wedgewood (satin), Mangrove (satin), Territory Red (matt), Claypot (satin), Paperbark (satin)

### Bold

Sky Blue (satin), Yellow Green (satin), Pure Orange (satin), Carmine Red (satin), Zinc Yellow (satin)

---

## Sustainability

### Certified Hardwood

Australian Eucalyptus hardwood is sourced from sustainable forests certified by the Program for the Endorsement of Forest Certification (PEFC), the world's largest forestry certification system.

### Material Alternatives

We offer sustainable alternatives to hardwood, such as Duraslat™; a mineral-based composite material that contains no Volatile Organic Compounds (VOCs) and is engineered using up to 46% natural filler that is based on a renewable mineral.

### Recycled Materials

We locally source our steel. It means we know it uses recycled content and is 100% recyclable.

### Low Pollutants

Our powder-coating process doesn't emit VOCs and has Environmental Product Declarations (EPDs) that enable projects to qualify for LEED credits.

---

## Warranty

5-year warranty. View the [warranty](#) for more details.

---

## Lead Time

6-8 weeks

---

## Assembly & Delivery

Shipped fully assembled on pallets.

---

## Fixing Detail

Surface fixed by others. Anchors not included.

---

## How to Specify

Select your batten finish  
Select your backrest finish  
Select your frame finish

---

# B+G SORRENTO BACK TO BACK SEAT

Seating » Seats

---

## Care Instructions

### Hardwood

#### Cleaning

Remove any loose surface deposits with a soft bristled brush and wipe down with fresh water and a non-abrasive cloth.

#### Oiling

Oiling of timber will postpone natural greying, repel moisture, improve mould resistance, help maintain a smooth surface texture and enhance the grain and colour.

To maintain, lightly sand rough areas of timber and brush on one coat of timber decking oil every 6 months or as required.

### Duraslat™

#### Cleaning

Clean with mild soap and water and use a soft brush to remove any dirt build-up.

### Powder-Coat

#### Cleaning

Carefully remove any loose surface deposits with a wet sponge or soft bristled brush.

Use a soft (non-abrasive) cloth or brush and a diluted solution of mild detergent and warm water.

Ensure surfaces are thoroughly rinsed with clean fresh water after cleaning to remove all residues.

Never use thinners, abrasive cleaning agents, alcohol-based, acid or alkali cleaning agents.

---

## Additional Comments

Hardwood is treated with a UV-resistant oil finish in a light or dark tone.

---