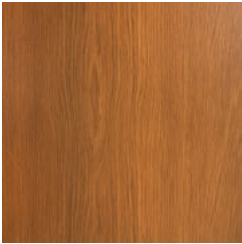


# B+G MANLY CAPSULE SINGLE POST LITTER BIN

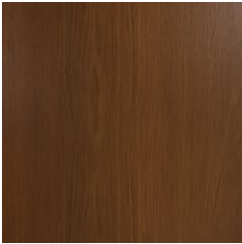


Collection: **Manly**

# B+G MANLY CAPSULE SINGLE POST LITTER BIN



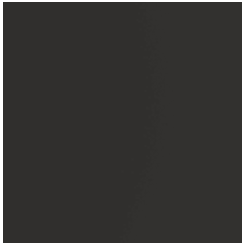
Hardwood Australian Eucalyptus Light Oil



Hardwood Australian Eucalyptus Dark Oil



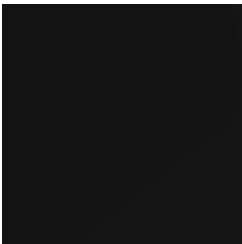
Core Powder-coat Coreten Textured



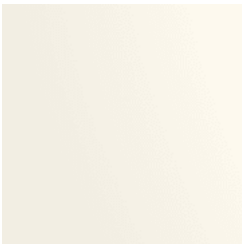
Core Powder-coat Charcoal Satin



Core Powder-coat Silver Pearl Satin Metallic



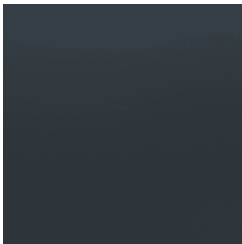
Core Powder-coat Black Satin



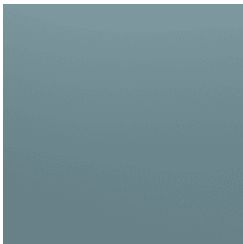
Core Powder-coat White Satin



Core Powder-coat Bronze Satin Metallic



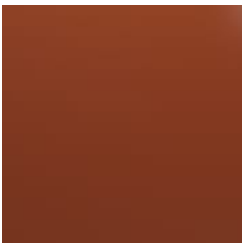
Signature Powder-Coat Deep Ocean Satin



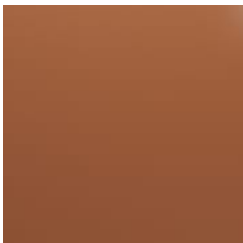
Signature Powder-Coat Wedgewood Satin



Signature Powder-Coat Mangrove Satin



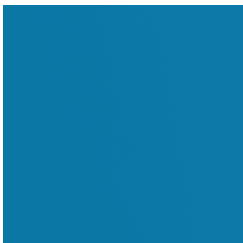
Signature Powder-Coat Territory Red Matt



Signature Powder-Coat Claypot Satin



Signature Powder-Coat Paperbark Satin



Bold Powder-coat Sky Blue Satin



Bold Powder-coat Yellow Green Satin



Bold Powder-coat Pure Orange Satin



Bold Powder-coat Carmine Red Satin



Bold Powder-coat Zinc Yellow Satin

# B+G MANLY CAPSULE SINGLE POST LITTER BIN



Modern, round capsule single post litter bin for undercover. 360° panel design in 2 hardwood colors or cut-out designs in 17 powder-coat finishes.

**Description** The contemporary, cylindrical design of the Manly single capsule single post litter bin creates a minimalist aesthetic that complements the curves of modern public spaces, indoors or out. Finishes include Australian Eucalyptus hardwood battens in 2 finishes, powder-coated steel using cut-out designs or plain in 17 colors. Manly is a versatile, eye-catching addition to public spaces that need to stand the test of time.

**Made In** USA

**Dimensions** Hardwood + Plain Panel  
ø26" x 32"H  
(ø650mm x 820mmH)  
  
Perforated Panel  
ø26" x 33"H  
(ø650mm x 830mmH)

**Capacity** 20 gal (80L)

# B+G MANLY CAPSULE SINGLE POST LITTER BIN

Weight	Hardwood 152lbs (69kg)
	Plain Panel 159lbs (72kg)
	Perforated Panel 154lbs (70kg)
Batten Type	Hardwood: Australian Eucalyptus
Frame	Powder-coated steel
Powder Coat	Core Coreten (textured), Charcoal (satin), Silver Pearl (satin metallic), Black (satin), White (satin), Bronze (satin metallic)
	Signature Deep Ocean (satin), Wedgewood (satin), Mangrove (satin), Territory Red (matt), Claypot (satin), Paperbark (satin)
	Bold Sky Blue (satin), Yellow Green (satin), Pure Orange (satin), Carmine Red (satin), Zinc Yellow (satin)
Signage	Vinyl decal signage for the flat lid on request.
Sustainability	Certified Hardwood Australian Eucalyptus hardwood is sourced from sustainable forests certified by the Program for the Endorsement of Forest Certification (PEFC), the world's largest forestry certification system.
	Recycled Materials We locally source our steel. It means we know it uses recycled content and is 100% recyclable.
	Low Pollutants Our powder-coating process doesn't emit Volatile Organic Compounds (VOCs) and has Environmental Product Declarations (EPDs) that enable projects to qualify for LEED credits.
Warranty	5-year warranty. View the <a href="#">warranty</a> for more details.
Lead Time	6-8 weeks
Assembly & Delivery	Shipped fully assembled on pallets.



# B+G MANLY CAPSULE SINGLE POST LITTER BIN

Fixing Detail	Post fixed by others - surface fixed. Anchors not included.
How to Specify	Select your size - single Select your capacity - 20 gal (80L) Select your lid and post color Select your panel design and finish Select your signage type Select your fixing type
Care Instructions	<p><u>Hardwood</u> Cleaning Remove any loose surface deposits with a soft bristled brush and wipe down with fresh water and a non-abrasive cloth.</p> <p>Oiling Oiling of timber will postpone natural greying, repel moisture, improve mould resistance, help maintain a smooth surface texture and enhance the grain and colour.</p> <p>To maintain, lightly sand rough areas of timber and brush on one coat of timber decking oil every 6 months or as required.</p> <p><u>Powder-Coat</u> Cleaning Carefully remove any loose surface deposits with a wet sponge or soft bristled brush.</p> <p>Use a soft (non-abrasive) cloth or brush and a diluted solution of mild detergent and warm water.</p> <p>Ensure surfaces are thoroughly rinsed with clean fresh water after cleaning to remove all residues.</p> <p>Never use thinners, abrasive cleaning agents, alcohol-based, acid or alkali cleaning agents.</p>
Additional Comments	Panel designs available in hardwood battens or powder-coated steel in plain or perforated cut-out designs.
	Hardwood is treated with a UV-resistant oil finish in a light or dark tone.
	Compression lock prevents door rattling.