

B+G MANLY CAPSULE DOUBLE POST LITTER BIN



Collections: **Manly**

B+G MANLY CAPSULE DOUBLE POST LITTER BIN



B+G MANLY CAPSULE DOUBLE POST LITTER BIN



B+G MANLY CAPSULE DOUBLE POST LITTER BIN



B+G MANLY CAPSULE DOUBLE POST LITTER BIN



B+G MANLY CAPSULE DOUBLE POST LITTER BIN

Modern, round capsule double post litter bin for undercover. 360° panel design in hardwood colors or cut-out designs in powder-coat finishes.

Description	The contemporary, cylindrical design of the Manly capsule double post litter bin creates a minimalist aesthetic that complements the curves of modern public spaces, indoors or out. Finishes include Australian Eucalyptus hardwood battens, powder-coated steel using cut-out designs or plain colors. Manly is a versatile, eye-catching addition to public spaces that need to stand the test of time.
How to Specify	Select your size - double Select your capacity - 20 gal (80L) Select your lid and post color Select your panel design and finish Select your signage type Select your fixing type
Sustainability	<p>Certified Hardwood Australian Eucalyptus hardwood is sourced from sustainable forests certified by the Program for the Endorsement of Forest Certification (PEFC), the world's largest forestry certification system.</p> <p>Recycled Materials We locally source our steel. It means we know it uses recycled content and is 100% recyclable.</p> <p>Low Pollutants Our powder-coating process doesn't emit Volatile Organic Compounds (VOCs) and has Environmental Product Declarations (EPDs) that enable projects to qualify for LEED credits.</p>
Powder Coat	Core Signature Bold
Dimensions	<p>Hardwood 51"W x 26"D x 32"H (1295mmW x 650mmD x 820mmH)</p> <p>Plain Panel 51"W x 26"D x 30"H (1295mmW x 650mmD x 755mmH)</p> <p>Perforated Panel 51"W x 26"D x 31"H (1295mmW x 650mmD x 800mmH)</p>

B+G MANLY CAPSULE DOUBLE POST LITTER BIN

Capacity	20 gal (80L)
Batten Type	Hardwood
Frame	Powder-coated steel
Weight	Hardwood 282lbs (128kg) Plain Panel 214lbs (97kg) Perforated Panel 207lbs (94kg)
Signage	Vinyl decal signage for the flat lid on request.
Made In	USA
Lead Time	6-8 weeks
Assembly & Delivery	Shipped fully assembled on pallets.
Fixing Detail	Post fixed by others - surface fixed. Anchors not included

B+G MANLY CAPSULE DOUBLE POST LITTER BIN

Care Instructions	<p><u>Hardwood</u></p> <p>Cleaning</p> <p>Remove any loose surface deposits with a soft bristled brush and wipe down with fresh water and a non-abrasive cloth.</p> <p>Oiling</p> <p>Oiling of timber will postpone natural greying, repel moisture, improve mould resistance, help maintain a smooth surface texture and enhance the grain and colour.</p> <p>To maintain, lightly sand rough areas of timber and brush on one coat of timber decking oil every 6 months or as required.</p> <p><u>Powder-Coat</u></p> <p>Cleaning</p> <p>Carefully remove any loose surface deposits with a wet sponge or soft bristled brush.</p> <p>Use a soft (non-abrasive) cloth or brush and a diluted solution of mild detergent and warm water.</p> <p>Ensure surfaces are thoroughly rinsed with clean fresh water after cleaning to remove all residues.</p> <p>Never use thinners, abrasive cleaning agents, alcohol-based, acid or alkali cleaning agents.</p>
Warranty	5-year warranty. View the warranty for more details.
Additional Comments	<p>Panel designs available in hardwood battens or powder-coated steel in plain or perforated cut-out designs.</p> <p>Hardwood is treated with a UV-resistant oil finish in a light or dark tone.</p> <p>Compression lock prevents door rattling.</p>

B+G MANLY CAPSULE DOUBLE POST LITTER BIN

Colour & Finish Options

B+G USA Hardwood



Australian
Eucalyptus Dark Oil



Australian
Eucalyptus Light Oil

B+G USA Powdercoats



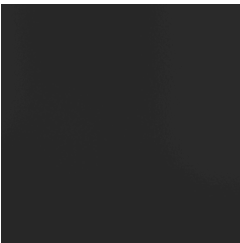
Black



Bronze



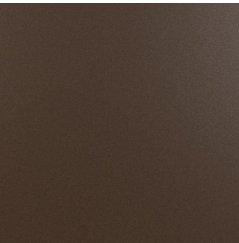
Carmine Red



Charcoal



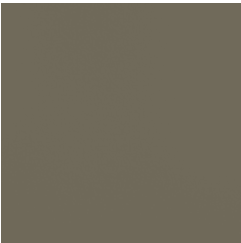
Claypot



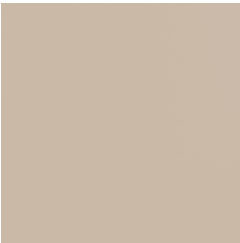
Core Ten



Deep Ocean



Mangrove



Paper Bark



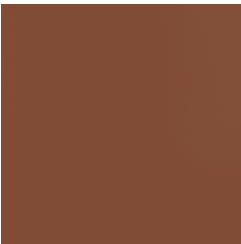
Pure Orange



Silver Pearl



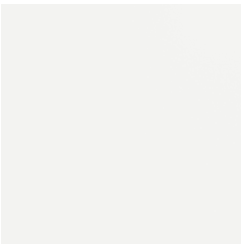
Sky Blue



Territory Red



Wedgewood



White



Yellow Green



Zinc Yellow